



MS Shashkov

Deck plan

MS Shashkov

136 cabins. All cabins are outside with A/C, private bathroom and shower, fridge, picture windows (except lower deck - portholes). On board facilities: 3 walk-around open-air promenade decks, 2 restaurants, 2 bars, Sun Deck, souvenir shop, laundry services, first aid station, ironing room.

Built 1986, refurbished 2013, 5 decks, 280 guests

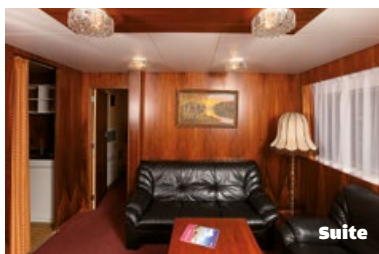
MS Shashkov was built in Germany in 1986 and refurbished in 2013. This comfortable 5-deck vessel features spacious suites, twin cabins and quad cabins for twin use on the Lower Deck. The quad cabins have portholes in place of scenic windows.



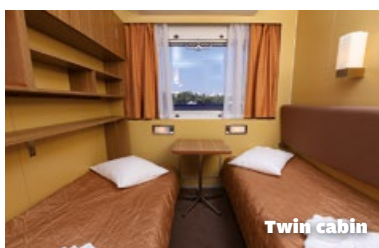
Restaurant



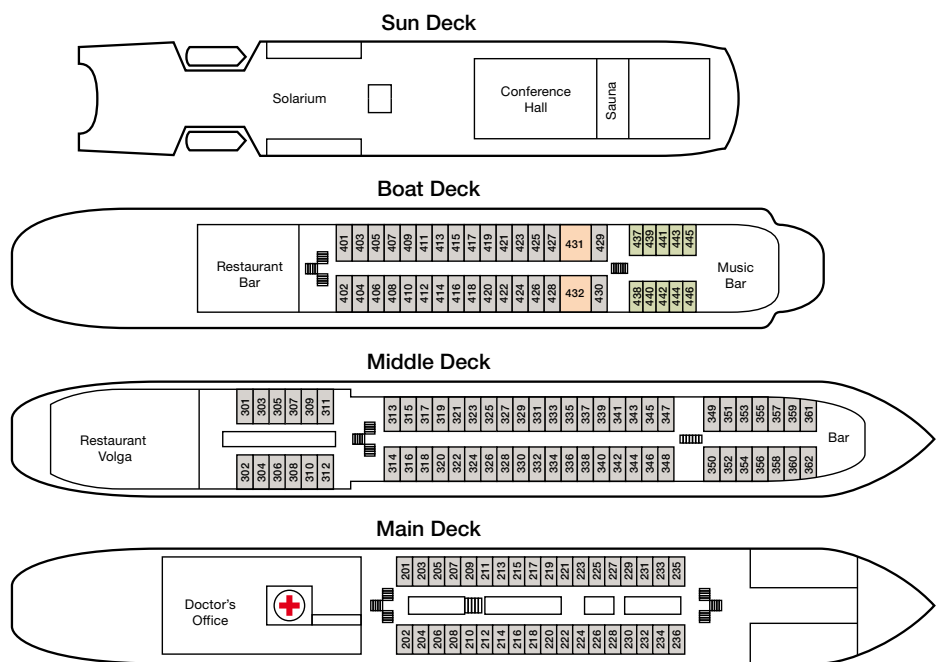
Bar



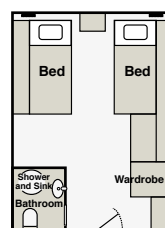
Suite



Twin cabin



Suite (double bed, can accommodate fold-away bed)
 Twin cabin
 Single cabin



Standard Cabin (approx.) 9m²

Quad cabins on Lower Deck (not illustrated) - available on request.