

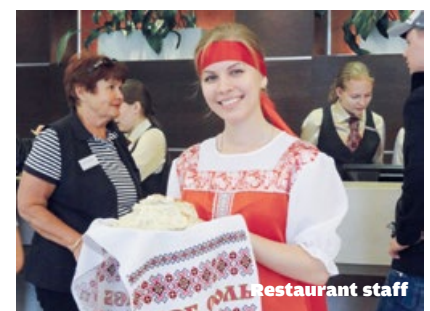


Gobi Desert, Folk show

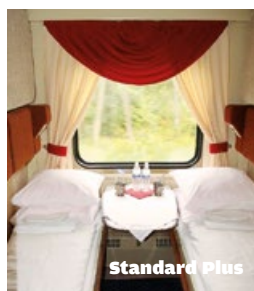
Grand Trans-Siberian Express

First class tour by private train

This tour may be booked eastbound or westbound, travelling through Russia, Mongolia and China. It offers a combination of hotel and rail accommodation. You spend 6 overnights on your private train in a choice of 4 different categories and 8 overnights in 4 and 5-star hotels, with daily sightseeing and a guaranteed daily shower for travellers of all categories. There is a restaurant on board and a lounge with a resident pianist in the evenings. The itinerary features a flight from Ulaanbaatar to Beijing to avoid the necessity of obtaining a visa for China (maximum stay in China 72 hrs). However, if you wish to travel by train between Mongolia and China then you will need to obtain a visa. The tour is escorted by a European Tour Director, with Russian tour escorts and local guides in each city. There will be a mix of guests from different countries on board.



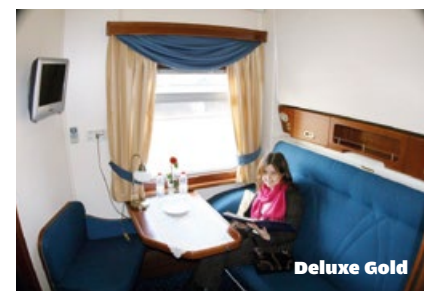
Standard Economy



Standard Plus



Deluxe Silver



Deluxe Gold

On board accommodation

Standard Economy

Standard Economy compartments are 4m² with centrally-controlled air conditioning and two lower and two upper beds (.65 by 1.85 metres). Toilets and wash basins are located at both ends of each Standard Economy carriage. Each carriage has 9 compartments. Standard Economy compartments may only be booked for quadruple use. Hotel accommodation is in two double rooms.

Standard Plus

Standard Plus compartments are 4m² with centrally-controlled air conditioning and have two lower and two upper beds (0.65 by 1.85 metres). The lower beds are used for sleeping. Upper beds can be used for storage or folded away. Toilets and wash basins are located at both ends of the carriage. Each carriage has 9 compartments. Standard Plus compartments may be reserved for double or single use.

Deluxe Silver

Deluxe Silver compartments are larger than Standard Economy and Standard Plus compartments at 5.4m² with individually controlled air conditioning (when train is moving), private toilet, wash basin and 'wet-style' shower. The upper bed is 0.8 by 1.85 metres and the lower bed 1.10 by 1.85 metres. There is an armchair and small wardrobe. Each carriage has 6 compartments.

Deluxe Gold

Deluxe Gold offers the most comfortable accommodation on the train at 7m². The compartments feature individually controlled air conditioning (when train is moving), a private toilet, wash basin and spacious shower compartment. The upper bed is 0.8 by 1.85 metres and the lower bed 1.20 by 1.85 metres. There is a table at the window, small armchair and wardrobe. Each carriage has 5 compartments.



Grand Trans-Siberian Express

First class tour by private train - 15 days/14 nights

Inclusions

- 6 nights on board Grand Trans-Siberian Express private train
- 1 night Moscow, 1 night Yekaterinburg, 1 night Novosibirsk, 1 night Irkutsk, 2 nights Ulaanbaatar, 2 nights Beijing in 4 & 5-star hotels
- All meals, with complimentary tea, coffee and mineral water
- Arrival/departure transfers
- Tour Manager
- Comprehensive sightseeing as specified conducted in **English**
- Economy class flight Ulaanbaatar-Beijing

Eastbound itinerary

Day 1 Moscow

Arrive Moscow. You will be met and transferred to your hotel. Overnight Moscow. **D**

Day 2 Moscow

City tour and Kremlin grounds. Late afternoon transfer to your private train for dinner and the beginning of your epic journey. Overnight on board. **BLD**

Day 3 On board & Yekaterinburg

Today is spent on board, travelling through endless scenery of forests, lakes and small settlements, followed by the Ural Mountains. Evening arrival Yekaterinburg, the 'Capital of the Urals', where you transfer to your hotel for overnight. **BLD**

Day 4 Yekaterinburg

Morning city tour including the Church on the Blood which was erected on the site where Tsar Nicholas II and his family were executed. Afternoon excursion

into the forest to Ganina Yama - an assembly of small chapels to honour the family members who were buried there. Overnight on board. **BLD**

Day 5 Novosibirsk

Full day on board. Late afternoon arrival and transfer to your hotel in Novosibirsk, Siberia's largest city, for overnight. **BLD**

Day 6 Novosibirsk

Morning city tour, including a visit to the famous Opera House. Afternoon drive to the Taiga - the real Siberian forest - for a visit to Russia's largest open-air railway museum. After a cruise on the River Ob, re-join your train for overnight on board. **BLD**

Day 7 Krasnoyarsk

During Soviet times Krasnoyarsk, like Yekaterinburg and Ulan Ude, was a 'closed city' to both foreigners and locals. Your city tour covers the major landmarks. Overnight on board. **BLD**

Day 8 Irkutsk

Morning arrival Irkutsk for a sightseeing tour of the city with its beautiful wooden houses. You'll attend a private classical concert in an historical house. Overnight Irkutsk hotel. **BLD**

Day 9 Lake Baikal

After breakfast, travel by bus to Lake Baikal for a walk through the village of Listvyanka, followed by a Siberian lunch which includes the famous Omul fish, only found in Lake Baikal. After lunch, take a short boat trip to Port Baikal where your private train awaits you. Your train travels at low speed along the Circumbaikal Railway line between Port Baikal and Sludyanka. A photo stop at a local village and a Baikal barbeque follow. Overnight on board. **BLD**

Day 10 Ulan Ude

Ulan Ude is the capital of the Buryat Republic and a fascinating mix of east and west. Your sightseeing includes a visit to a

village of Orthodox Old Believers. This evening, you reach the Russian border station Naushki and the Mongolian border station Sukhbaatar. Russian and Mongolian immigration formalities will take place on the train. You may stay in your compartment. Overnight on board. **BLD**

Day 11 Ulaanbaatar

Morning arrival Ulaanbaatar. Your city tour includes a visit to the Gandan Monastery and Bogd Khan Museum. A fascinating cultural show of Mongolian music and dance follows. Overnight Ulaanbaatar hotel. **BLD**

Day 12 Ulaanbaatar

Today you travel to the Terelj National Park with its beautiful mountainous scenery. A private Naadam show demonstrates wrestling, archery and horseracing - the three disciplines of the National Naadam festival. Overnight Ulaanbaatar hotel. **BLD**

Day 13 Ulaanbaatar & Beijing

Morning visit to the Historical Museum with afternoon visit to a cashmere factory. Evening 2-hour flight to Beijing, Overnight Beijing hotel. (Alternatively you may choose to travel by train for the 30-hour journey. This will require a Chinese visa.) **BLD**

Day 14 Beijing

Morning trip to the Great Wall of China, with an afternoon visit to the Forbidden City and Tiananmen Square. Overnight Beijing Hotel. **BLD**

Day 15 Beijing

Your rail tour ends today after breakfast with a transfer to the airport. **B**

Tour prices & departures

Prices shown per person in **EUR**. Applicable Jun-Sep 2017.

Departures	Standard Economy		Standard Plus		Deluxe Silver		Deluxe Gold	
	Quad	Sgl	Twn	Sgl	Twn	Sgl	Twn	Sgl
EASTBOUND MOSCOW-BEIJING								
3 Jun, 1 Jul	4470	n/a	6590	9260	10470	16290	12670	19590
7 Aug, 2 Sep	4630	n/a	6750	9420	10630	16450	12830	19750
WESTBOUND BEIJING-MOSCOW (14 days/13 nights)								
10 Jun, 8 Jul	4370	n/a	6390	8950	10270	15980	12470	19280
12 Aug, 9 Sep	4530	n/a	6550	9110	10430	16140	12630	19440