



MS Chernyshevsky

Deck plan

MS Chernyshevsky & MS Fedin

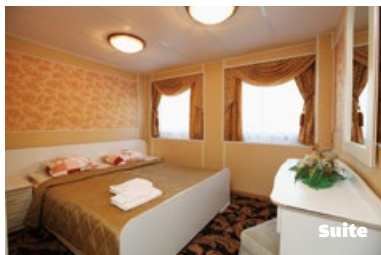
136 cabins. All cabins are outside with A/C, private bathroom and shower, fridge, picture windows (except lower deck - portholes). On board facilities: 3 walk-around open-air promenade decks, 2 restaurants, 2 bars, Sun Deck, souvenir shop, laundry services, first aid station, ironing room.

Built 1981/1980, refurbished 2013/2012, 5 decks, 250 guests

The popular MS Chernyshevsky and sister ship MS Fedin were built in Germany in 1981 and 1980 respectively and refurbished in 2013 and 2012. These comfortable 5-deck vessels feature spacious junior suites and suites, twin cabins and triple cabins for twin use on the Lower Deck. The triple cabins have portholes in place of scenic windows.



Bar



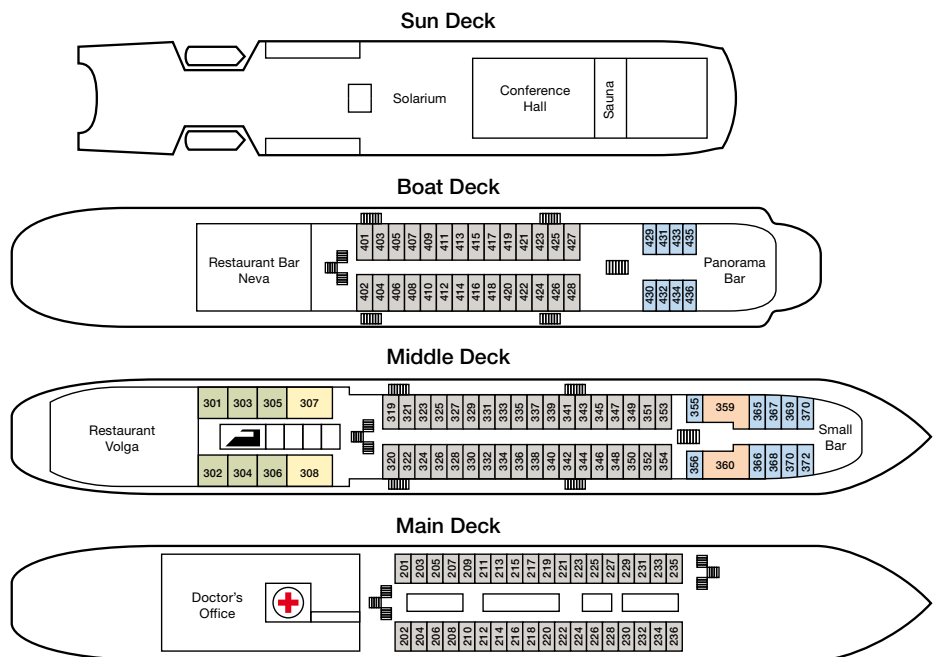
Suite



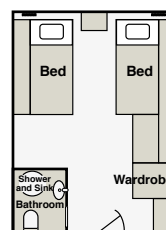
Junior Suite A



Twin Cabin



- Suite (double bed, can accommodate fold-away bed)
- Junior Suite A (double bed, can accommodate fold-away bed)
- Junior Suite B (twin beds, upper & lower can accommodate up to 4 persons)
- Twin cabin
- Single cabin



Standard Cabin (approx.) 9m²

Triple cabins on Lower Deck (not illustrated) - available on request.